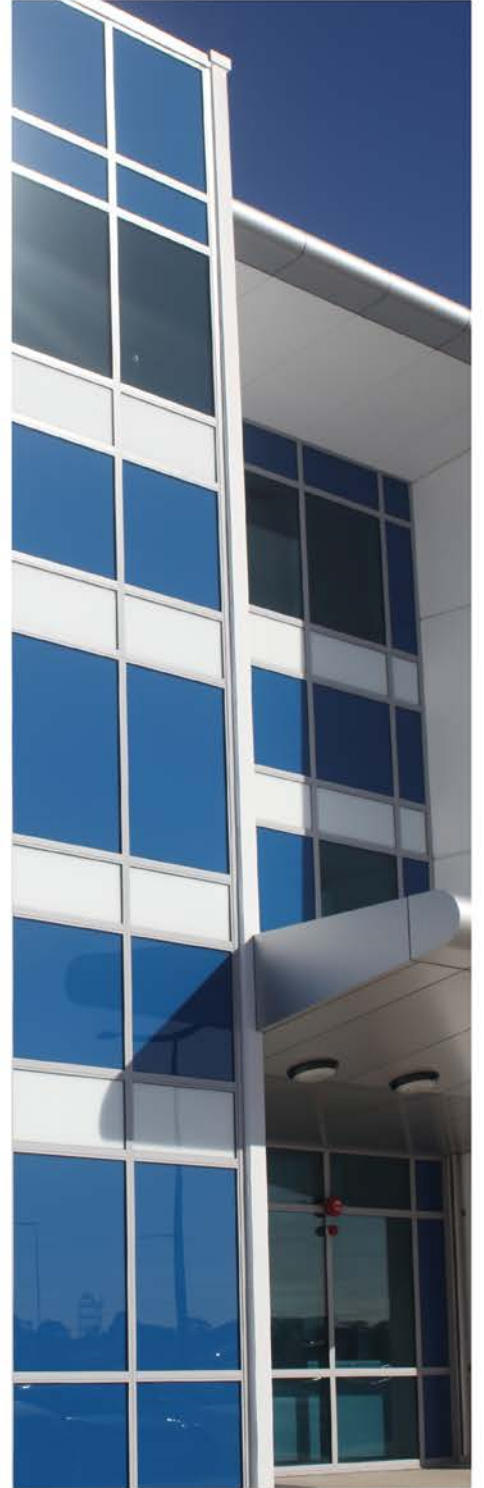


PERFORMANCE DATA IGU



WALSHSGLASS

THE GLASS SPECIALIST

P +61 8 9366 6666 F +61 8 9455 2640 198 BANNISTER ROAD, CANNING VALE WA 6155

TWIN SEAL IGUs

PRODUCT NAME	NOMINAL THICKNESS	VISIBLE		SOLAR		UV TRANS	U VALUE		SHGC	SHADING CO.	WEIGHT M ²
		Trans	Refl.	Trans	Refl.		Air	Argon			
Float											
Clear	3+12+3	81	15	69	13	53	2.7	2.6	0.75	0.87	15
	4+12+4	80	15	69	13	51	2.7	2.6	0.75	0.86	20
	5+12+5	79	15	63	12	47	2.7	2.5	0.72	0.83	25
	6+12+6	78	15	62	12	44	2.7	2.5	0.71	0.82	30
	8+12+6	77	14	57	11	42	2.7	2.5	0.66	0.76	35
	10+12+6	76	14	54	10	39	2.7	2.5	0.64	0.73	40
Grey	12+12+6	75	14	51	10	37	2.6	2.5	0.61	0.71	45
	4+12+4	50	8	46	8	24	2.7	2.6	0.55	0.64	20
	5+12+5	42	7	38	7	19	2.7	2.5	0.49	0.57	25
	6+12+6	37	7	33	7	15	2.7	2.5	0.45	0.52	30
	10+12+6	24	5	24	5	9	2.7	2.5	0.38	0.44	40
Green	12+12+6	19	5	20	5	7	2.6	2.5	0.34	0.40	45
	4+12+4	73	13	49	9	30	2.7	2.5	0.57	0.66	20
	5+12+5	70	13	42	9	25	2.7	2.5	0.52	0.60	25
	6+12+6	68	12	39	8	21	2.7	2.5	0.50	0.57	30
Bronze	10+12+6	56	9	24	6	9	2.6	2.5	0.37	0.43	40
	4+12+4	55	10	50	9	23	2.7	2.5	0.59	0.68	20
	5+12+5	48	8	41	7	18	2.7	2.5	0.52	0.61	25
	6+12+6	43	8	38	7	15	2.7	2.5	0.50	0.57	30
10+12+6	30	6	28	6	7	2.6	2.5	0.41	0.48	40	
Laminate											
Clear	6.38+12+6	78	15	58	12	<1	2.7	2.5	0.67	0.77	30.4
Grey	6.38+12+6	37	7	37	7	<1	2.7	2.5	0.49	0.56	30.4
Bronze	6.38+12+6	46	8	40	8	<1	2.7	2.5	0.52	0.60	30.4
Green	6.38+12+6	63	11	50	9	<1	2.7	2.5	0.60	0.70	30.4
Translucent	6.38+12+6	58	10	44	8	<1	2.7	2.5	0.55	0.64	30.4
High Performance Tones											
SuperGreen	6+12+6	59	10	28	6	10	2.7	2.5	0.39	0.46	30
VFloat SuperGrey	6+12+6	8	4	6	4	1	2.7	2.5	0.21	0.25	30
SuperBlue	6+12+6	47	8	27	6	17	2.7	2.5	0.39	0.46	30
Viridian EVantage™											
Grey (#2)	6+12+6	29	10	24	9	8	2.0	1.7	0.33	0.39	30
Bronze (#2)	6+12+6	34	13	28	11	9	2.0	1.7	0.38	0.44	30
BlueGreen (#2)	6+12+6	51	21	29	12	13	2.0	1.7	0.38	0.44	30
Clear (#2)	6+12+6	61	27	47	20	23	2.0	1.7	0.56	0.64	30
SuperGreen (#2)	6+12+6	44	18	21	9	7	2.0	1.7	0.30	0.34	30
SuperBlue (#2)	6+12+6	35	13	19	9	8	1.9	1.7	0.29	0.33	30
Viridian EnergyTech™											
EnergyTech Clear (#2)	4+12+4	75	17	57	15	41	1.9	1.6	0.64	0.74	20
	6+12+6	73	16	52	14	36	1.9	1.6	0.61	0.71	30
	10+12+6	71	16	48	12	32	1.9	1.6	0.58	0.66	40
EnergyTech Green (#2)	4+12+4	68	15	41	10	25	1.9	1.7	0.49	0.56	20
	6+12+6	63	13	33	9	19	1.9	1.6	0.41	0.48	30
EnergyTech SuperGreen (#2)	4+12+4	61	13	32	8	15	1.9	1.6	0.39	0.45	20
	6+12+6	54	11	24	7	10	1.9	1.6	0.32	0.37	30
EnergyTech Grey (#2)	4+12+4	45	9	38	9	18	1.9	1.6	0.46	0.53	20
	6+12+6	35	8	29	8	13	1.9	1.6	0.39	0.45	30
Viridian SolTech™											
SolTech Neutral (#2)	4+12+4	55	12	38	10	34	1.9	1.6	0.46	0.53	20
	6+12+6	56	12	36	10	30	1.9	1.6	0.45	0.52	30
SolTech Grey (#2)	6+12+6	27	6	19	6	10	1.9	1.6	0.28	0.33	30
Sunergy Float											
Neutral (#2)	4+12+6	61	12	44	12	39	2.1	1.9	0.61	0.53	20
	6+12+6	60	12	41	11	34	2.1	1.9	0.59	0.51	30
	8+12+6	59	12	39	11	32	2.1	1.9	0.57	0.45	35
	10+12+6	55	12	40	11	33	2.1	1.9	0.56	0.49	40
Green (#2)	6+12+6	49	10	23	7	13	2.1	1.9	0.38	0.33	30
Azur (#2)	6+12+6	49	10	26	7	20	2.1	1.9	0.41	0.35	30

Information derived from Viridian Glass, AGC & Guardian Industries.

TWIN SEAL IGUs with LOW E

PRODUCT NAME	NOMINAL THICKNESS	VISIBLE		SOLAR		UV TRANS	U VALUE		SHGC	SHADING CO.	WEIGHT M ²	
		Trans	Refl.	Trans	Refl.		Air	Argon				
Float												
Clear	3+12+3	75	18	58	16	42	1.9	1.6	0.70	0.81	17.5	
	4+12+4	74	18	57	16	41	1.9	1.6	0.70	0.81	20	
	5+12+5	74	17	55	15	40	1.9	1.6	0.68	0.78	22.5	
	6+12+6	73	17	52	15	35	1.9	1.6	0.67	0.77	30	
	8+12+8	71	17	48	13	34	1.9	1.6	0.62	0.71	35	
	10+12+6	70	17	46	13	32	1.9	1.6	0.59	0.68	40	
Grey	12+12+6	69	16	44	12	30	1.9	1.6	0.57	0.65	45	
	4+12+4	46	9	38	10	20	1.9	1.6	0.50	0.57	20	
	5+12+4	39	8	32	9	16	1.9	1.6	0.44	0.51	22.5	
	6+12+6	34	7	27	8	12	1.9	1.6	0.40	0.46	30	
Green	10+12+6	22	5	20	6	7	1.9	1.6	0.32	0.37	40	
	12+12+6	17	5	16	6	6	1.9	1.6	0.28	0.33	45	
	4+12+4	68	15	41	11	24	1.9	1.6	0.52	0.60	20	
	5+12+4	66	15	37	10	21	1.9	1.6	0.47	0.54	22.5	
Bronze	6+12+6	63	14	33	9	17	1.9	1.6	0.45	0.51	30	
	10+12+6	52	11	21	7	7	1.9	1.6	0.32	0.36	40	
	4+12+4	51	11	41	11	19	1.9	1.6	0.54	0.62	20	
	5+12+4	45	9	35	9	15	1.9	1.6	0.47	0.55	22.5	
Laminate	6+12+6	40	8	31	9	12	1.9	1.6	0.44	0.51	30	
	10+12+6	28	6	19	7	6	1.9	1.6	0.36	0.42	40	
	Clear	6.38+12+6	72	17	50	13	<1	1.9	1.6	0.63	0.73	30.4
	Grey	6.38+12+6	34	7	30	8	<1	1.9	1.6	0.44	0.51	30.4
Bronze	6.38+12+6	43	9	34	9	<1	1.9	1.6	0.47	0.55	30.4	
Green	6.38+12+6	59	13	42	11	<1	1.9	1.6	0.56	0.65	30.4	
Cool Blue	6.38+12+6	59	13	42	11	<1	1.9	1.6	0.56	0.64	30.4	
Translucent	6.38+12+6	55	12	38	10	<1	1.9	1.6	0.51	0.59	30.4	
Soft White	6.38+12+6	65	15	43	11	<1	1.9	1.6	0.57	0.65	30.4	
SuperGreen	6.38+12+6	53	12	22	7	<1	1.9	1.6	0.32	0.38	30.4	
Translucent Grey	6.76+12+6	26	6	23	7	<1	1.9	1.6	0.37	0.42	30.8	
High Performance Tones												
SuperGreen	4+12+4	61	13	31	8	15	1.9	1.6	0.41	0.47	20	
	5+12+4	59	12	28	8	12	1.9	1.6	0.38	0.44	22.5	
	6+12+6	55	12	24	7	8	1.9	1.6	0.35	0.40	30	
VFloat SuperGrey	6+12+6	7	4	5	4	1	1.9	1.6	0.15	0.18	30	
SuperBlue	6+12+6	43	9	23	7	13	1.9	1.6	0.34	0.39	30	
	10+12+6	34	7	16	6	8	1.9	1.6	0.26	0.30	40	
Viridian EVantage™ Reflective												
Grey (#2)	6+12+6	27	11	20	9	7	1.8	1.5	0.31	0.36	30	
Bronze (#2)	6+12+6	32	13	24	11	7	1.8	1.5	0.35	0.41	30	
BlueGreen (#2)	6+12+6	47	22	26	13	10	1.8	1.5	0.36	0.41	30	
Clear (#2)	6+12+6	57	29	41	21	19	1.8	1.5	0.53	0.61	30	
SuperGreen (#2)	6+12+6	41	19	18	10	5	1.8	1.5	0.27	0.32	30	
SuperBlue (#2)	6+12+6	33	14	17	9	7	1.8	1.5	0.27	0.31	30	
Viridian EnergyTech™												
EnergyTech Clear (#2)	4+12+4	69	19	51	16	34	1.8	1.5	0.61	0.71	20	
	6+12+6	67	19	47	15	29	1.8	1.5	0.59	0.68	30	
	10+12+6	65	18	43	13	26	1.7	1.5	0.55	0.63	40	
EnergyTech Green (#2)	4+12+4	63	17	37	11	20	1.8	1.5	0.46	0.53	20	
	6+12+6	59	15	29	9	15	1.8	1.5	0.39	0.45	30	
EnergyTech SuperGreen (#2)	4+12+4	57	14	28	9	12	1.8	1.5	0.37	0.43	20	
	6+12+6	50	13	22	8	8	1.8	1.5	0.31	0.35	30	
Viridian SolTech™												
SolTech Neutral (#2)	4+12+4	51	13	34	11	28	1.8	1.5	0.44	0.51	20	
	6+12+6	52	13	32	11	24	1.7	1.5	0.43	0.50	30	
SolTech Grey (#2)	6+12+6	25	6	17	7	8	1.8	1.5	0.27	0.31	15	
Viridian ComfortPlus™												
Clear 82 (#2)	8.38+12+6	67	18	43	13	<1	1.7	1.5	0.55	0.64	35.4	
	10.38+12+6	66	18	42	13	<1	1.7	1.5	0.54	0.60	40.4	
	12.38+12+6	65	18	40	12	<1	1.7	1.5	0.52	0.59	45.4	
Neutral 59 (#2)	8.38+12+6	49	13	30	9	<1	1.7	1.5	0.40	0.46	35.4	
Grey 37 (#2)	8.38+12+6	31	7	19	7	<1	1.7	1.5	0.30	0.34	35.4	
SuperGreen 49 (#2)	8.38+12+6	40	10	18	6	<1	1.7	1.5	0.27	0.31	35.4	
SuperBlue 44 (#2)	10.38+12+6	29	7	14	6	<1	1.7	1.5	0.23	0.27	40.4	
Viridian ComfortHush™												
Clear (#2)	6.5+12+6	68	18	45	14	<1	1.7	1.5	0.58	0.66	30.5	
Neutral (#2)	6.5+12+6	49	13	30	9	<1	1.7	1.5	0.40	0.46	30.5	
Viridian EnviroShield™ Performance												
ITO Clear 74 (#2)	8.76+12+6	62	16	34	10	<1	1.7	1.5	0.44	0.51	35.8	
ITO Green 67 (#2)	8.76+12+6	57	14	26	8	<1	1.7	1.5	0.36	0.41	35.8	
ITO Neutral 54 (#2)	8.76+12+6	46	11	24	7	<1	1.7	1.5	0.34	0.39	35.8	
ITO Grey 33 (#2)	8.76+12+6	29	7	16	6	<1	1.7	1.5	0.25	0.30	35.8	
ITO SuperGreen 45 (#2)	8.76+12+6	38	9	15	6	<1	1.7	1.5	0.25	0.28	35.8	
ITO SuperBlue 40 (#2)	12.76+12+6	28	7	12	5	<1	1.7	1.5	0.21	0.25	40.8	

Information derived from Viridian Glass. www.viridianglass.com.au

TWIN SEAL IGUs with LOW E cont.

Clear Float has been used as the inner panel.

The data is measured using glass only and all care should be taken when evaluating our published data that the same environmental conditions have been used.

For the most up-to-date information, please visit our website.

All performance data is calculated using LBL Windows 5.2 software. NFRC 100-2001 conditions have been used.

Product Name - Where # appears, ie {#2}, this identifies the position of the coated surface of the glass. Glass surfaces are counted from the exterior to the interior of the building.

The first number is the outer glass thickness, +12 is the width of the gap, then the thickness of the inner panel of the unit.