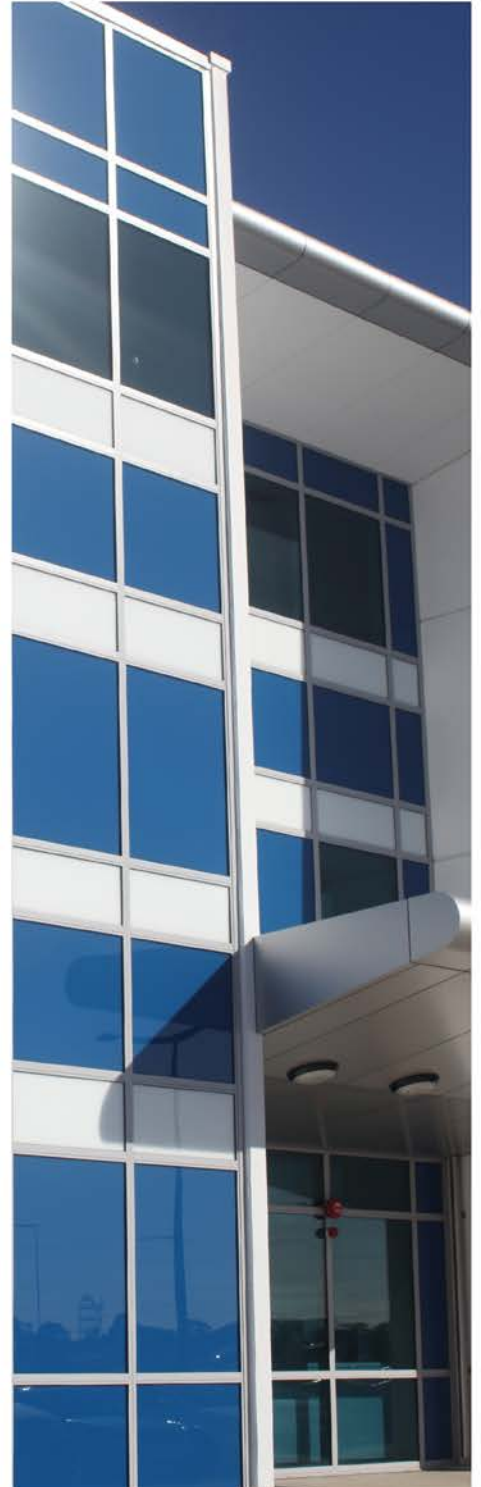


# PERFORMANCE DATA SINGLE GLAZED



**WALSHSGLASS**

THE GLASS SPECIALIST

P +61 8 9366 6666 F +61 8 9455 2640 198 BANNISTER ROAD, CANNING VALE WA 6155

# SINGLE GLAZING

PRODUCT NAME	NOMINAL THICKNESS	VISIBLE		SOLAR		UV TRANS	U VALUE	SHGC	SHADING CO.	WEIGHT M <sup>2</sup>
		Trans	Refl.	Trans	Refl.					
<b>Float</b>										
Clear	3	89	8	83	8	69	5.9	0.85	0.98	7.5
	4	89	8	82	8	67	5.9	0.85	0.98	10
	5	88	8	79	7	63	5.9	0.83	0.95	12.5
	6	88	8	78	7	60	5.8	0.82	0.95	15
	8	86	8	71	7	56	5.7	0.77	0.89	20
	10	85	8	67	7	52	5.7	0.75	0.86	25
	12	84	8	64	7	48	5.6	0.72	0.84	30
	15	82	7	59	6	45	5.5	0.70	0.81	37.5
Grey	19	80	7	55	6	41	5.4	0.67	0.78	47.5
	4	56	6	55	6	30	5.9	0.66	0.77	10
	5	47	6	47	5	23	5.8	0.61	0.71	12.5
	6	42	5	42	5	19	5.8	0.58	0.67	15
Green	10	27	5	31	5	12	5.7	0.51	0.59	25
	12	21	4	25	5	9	5.6	0.47	0.55	30
	4	82	8	58	6	36	5.9	0.68	0.79	10
	5	79	7	51	6	32	5.9	0.63	0.74	12.5
Bronze	6	77	7	47	5	27	5.8	0.61	0.71	15
	10	63	6	29	5	11	5.7	0.49	0.57	25
	4	61	7	60	6	28	5.9	0.70	0.81	10
	5	54	6	52	6	22	5.9	0.64	0.74	12.5
Laminate	6	49	6	48	5	19	5.8	0.62	0.71	15
	10	34	5	36	5	9	5.7	0.54	0.63	25
	6.38	87	8	72	7	<1	5.7	0.78	0.90	15.4
	6.76	86	8	71	7	<1	5.7	0.78	0.90	15.8
Clear	7.52	87	8	69	7	<1	5.6	0.76	0.88	16.6
	8.38	87	8	72	7	<1	5.7	0.78	0.90	20.4
	10.38	86	8	66	7	<1	5.6	0.74	0.85	25.4
	12.38	85	8	65	7	<1	5.6	0.74	0.85	30.4
	6.38	42	5	47	6	<1	5.7	0.61	0.71	15.4
Grey	8.38	41	5	46	5	<1	5.7	0.61	0.71	20.4
	10.38	41	5	42	5	<1	5.6	0.59	0.67	25.4
	12.38	41	5	41	5	<1	5.6	0.58	0.67	30.4
Bronze	6.38	52	6	51	6	<1	5.7	0.64	0.74	15.4
	8.38	52	6	50	6	<1	5.7	0.64	0.74	20.4
	10.38	51	6	46	5	<1	5.7	0.61	0.70	25.4
	12.38	51	6	45	5	<1	5.6	0.61	0.70	30.4
Green	6.38	71	7	63	6	<1	5.7	0.72	0.83	15.4
	8.38	71	7	62	6	<1	5.7	0.72	0.83	20.4
	10.38	70	7	57	6	<1	5.6	0.69	0.79	25.4
	12.38	69	7	56	6	<1	5.6	0.68	0.78	30.4
Translucent	6.38	66	7	56	6	<1	5.7	0.67	0.78	15.4
	8.38	66	7	55	6	<1	5.7	0.67	0.77	20.4
	10.38	64	7	51	6	<1	5.6	0.64	0.74	25.4
	12.38	64	6	50	6	<1	5.6	0.64	0.73	30.4
<b>Low Iron</b>										
Clear	6	91	8	89	8	84	5.8	0.90	1.03	15
	10	90	8	87	8	81	5.7	0.89	1.02	25
<b>High Performance Tones</b>										
Evergreen	6	66	8	33	6	14	5.8	0.60	0.51	15
Super Green	6	67	6	34	5	13	5.8	0.52	0.61	15
Dark Grey	6	9	4	8	4	1	5.7	0.41	0.35	15
Super Grey	6	9	4	8	4	1	5.8	0.35	0.41	15
Super Blue	6	53	6	33	5	20	5.8	0.52	0.60	15
<b>Sunergy Float</b>										
Neutral (#2)	4	69	9	54	10	49	4.2	0.7	0.61	10
	6	68	9	52	10	46	4.1	0.69	0.59	15
	8	67	9	50	9	43	4.1	0.68	0.58	20
	10	66	8	48	9	40	4.1	0.66	0.57	25
Green (#2)	6	56	7	28	6	16	4.1	0.49	0.42	15
Azur (#2)	6	56	7	31	6	25	4.1	0.52	0.44	15
Grey (#2)	6	33	5	29	6	13	4.1	0.49	0.43	15
<b>Viridian EVantage™</b>										
Grey (#2)	6	32	10	29	8	10	3.8	0.41	0.48	15
Bronze (#2)	6	38	11	35	10	11	3.8	0.45	0.53	15
BlueGreen (#2)	6	56	19	35	11	16	3.8	0.45	0.53	15
Clear (#2)	6	68	23	59	17	30	3.8	0.63	0.73	15
SuperGreen (#2)	6	49	16	24	9	8	3.8	0.37	0.43	15
SuperBlue (#2)	6	39	12	23	8	10	3.8	0.36	0.43	15

Information derived from Viridian Glass, AGC & Guardian Industries.

# SINGLE GLAZING cont.

PRODUCT NAME	NOMINAL THICKNESS	VISIBLE		SOLAR		UV TRANS	U VALUE	SHGC	SHADING CO.	WEIGHT M <sup>2</sup>
		Trans	Ref.	Trans	Ref.					
<b>Viridian EnergyTech™</b>										
EnergyTech Clear (#2)	4	83	11	68	11	54	3.7	0.72	0.83	10
	5	82	11	67	11	52	3.7	0.70	0.81	12.5
	6	81	11	65	10	48	3.6	0.69	0.80	15
	10	79	11	60	9	43	3.6	0.65	0.76	25
EnergyTech Green (#2)	4	75	10	49	8	30	3.7	0.56	0.65	10
	6	71	9	39	7	23	3.7	0.49	0.57	15
EnergyTech SuperGreen (#2)	4	68	9	37	7	18	3.7	0.47	0.54	10
	6	61	8	28	6	12	3.7	0.40	0.47	15
EnergyTech Grey (#2)	4	50	7	45	7	21	3.7	0.53	0.62	10
	6	40	6	37	7	16	3.7	0.47	0.55	15
<b>Viridian SolTech™</b>										
SolTech Neutral (#2)	4	61	8	46	8	44	3.7	0.53	0.62	10
	6	63	9	45	8	41	3.7	0.53	0.62	15
SolTech Grey (#2)	6	30	5	23	6	13	3.7	0.36	0.42	15
<b>Viridian ComfortPlus™</b>										
Neutral 59 (#4)	6.38	59	7	42	7	<1	3.6	0.51	0.60	15.4
	8.38	60	8	41	7	<1	3.6	0.50	0.58	20.4
	10.38	62	8	40	7	<1	3.6	0.49	0.58	25.4
	12.38	61	8	39	7	<1	3.5	0.49	0.57	30.4
Grey 40 (#4)	6.38	39	6	40	7	<1	3.6	0.50	0.58	15.4
	8.38	39	6	38	7	<1	3.6	0.48	0.56	20.4
	10.38	38	6	36	6	<1	3.6	0.47	0.54	25.4
	12.38	38	6	34	6	<1	3.5	0.45	0.53	30.4
Green 71 (#4)	6.38	71	9	41	7	<1	3.6	0.50	0.59	15.4
	10.38	65	8	32	6	<1	3.6	0.43	0.51	25.4
	12.38	59	8	26	5	<1	3.5	0.39	0.46	30.4
Clear 82 (#4)	6.38	82	10	64	9	<1	3.6	0.68	0.79	15.4
	8.38	80	11	60	9	<1	3.6	0.66	0.76	20.4
	10.38	79	11	58	9	<1	3.6	0.64	0.74	25.4
	12.38	79	10	55	8	<1	3.5	0.62	0.72	30.4
Grey 37 (#4)	8.38	37	6	27	6	<1	3.6	0.39	0.46	20.4
	10.38	38	6	26	6	<1	3.6	0.39	0.46	25.4
	12.38	29	5	20	5	<1	3.5	0.34	0.40	30.4
Translucent (#4)	6.38	62	8	48	7	<1	3.6	0.56	0.65	15.4
	10.38	60	8	44	7	<1	3.6	0.53	0.62	25.4
<b>Viridian ComfortHush™</b>										
Clear (#4)	6.5	82	10	64	9	<1	3.6	0.68	0.79	15.5
Neutral (#4)	6.5	59	7	42	7	<1	3.6	0.51	0.60	15.5
<b>Viridian VLam Hush™</b>										
Clear (#4)	6.5	87	8	72	7	<1	5.7	0.78	0.90	15.5
	8.5	87	8	72	7	<1	5.7	0.78	0.90	20.5
	10.5	87	8	70	7	<1	5.6	0.77	0.89	25.5
	12.5	87	8	69	7	<1	5.5	0.76	0.88	30.5
<b>Enviroshield™ Performance</b>										
ITO Clear 74 (#4)	8.76	75	10	45	7	<1	3.6	0.54	0.63	20.8
	10.76	74	10	44	7	<1	3.5	0.53	0.61	25.8
	12.76	73	10	42	7	<1	3.5	0.51	0.60	30.8
ITO Green 67 (#4)	8.76	69	9	34	6	<1	3.6	0.45	0.53	20.8
	10.76	68	9	33	6	<1	3.5	0.44	0.52	25.8
	12.76	64	8	28	6	<1	3.5	0.41	0.48	30.8
<b>Enviroshield™ Performance</b>										
ITO Neutral 54 (#4)	8.76	56	8	32	6	<1	3.6	0.44	0.51	20.8
	10.76	58	8	32	6	<1	3.5	0.44	0.51	25.8
	12.76	57	8	31	6	<1	3.5	0.43	0.50	30.8
ITO Grey 33 (#4)	8.76	35	6	21	5	<1	3.6	0.35	0.41	20.8
	10.76	36	6	21	5	<1	3.5	0.35	0.41	25.8
	12.76	27	5	16	5	<1	3.5	0.31	0.37	30.8
ITO SuperGreen 45 (#4)	8.76	46	7	19	5	<1	3.6	0.34	0.40	20.8
	10.76	47	7	20	5	<1	3.5	0.34	0.40	25.8
	12.76	43	6	17	5	<1	3.5	0.33	0.38	30.8
ITO SuperBlue 40 (#4)	12.76	34	6	15	5	<1	3.6	0.31	0.36	30.8
XIR Clear 71	6.76	73	7	39	23	<1	5.7	0.50	0.58	15.8
XIR Clear 70	12.76	71	7	37	21	<1	5.5	0.50	0.58	30.8
XIR EnergyTech 62 (#4)	12.76	65	9	32	21	<1	3.5	0.41	0.48	30.8

Information derived from Viridian Glass, AGC & Guardian Industries.

The data is measured using glass only and all care should be taken when evaluating our published data that the same environmental conditions have been used.

For the most up-to-date information, please visit our website.

All performance data is calculated using LBL Windows 5.2 software. NFRC 100-2001 conditions have been used.

Product Name - Where # appears, ie (#2), this identifies the position of the coated surface of the glass. Glass surfaces are counted from the exterior to the interior of the building.